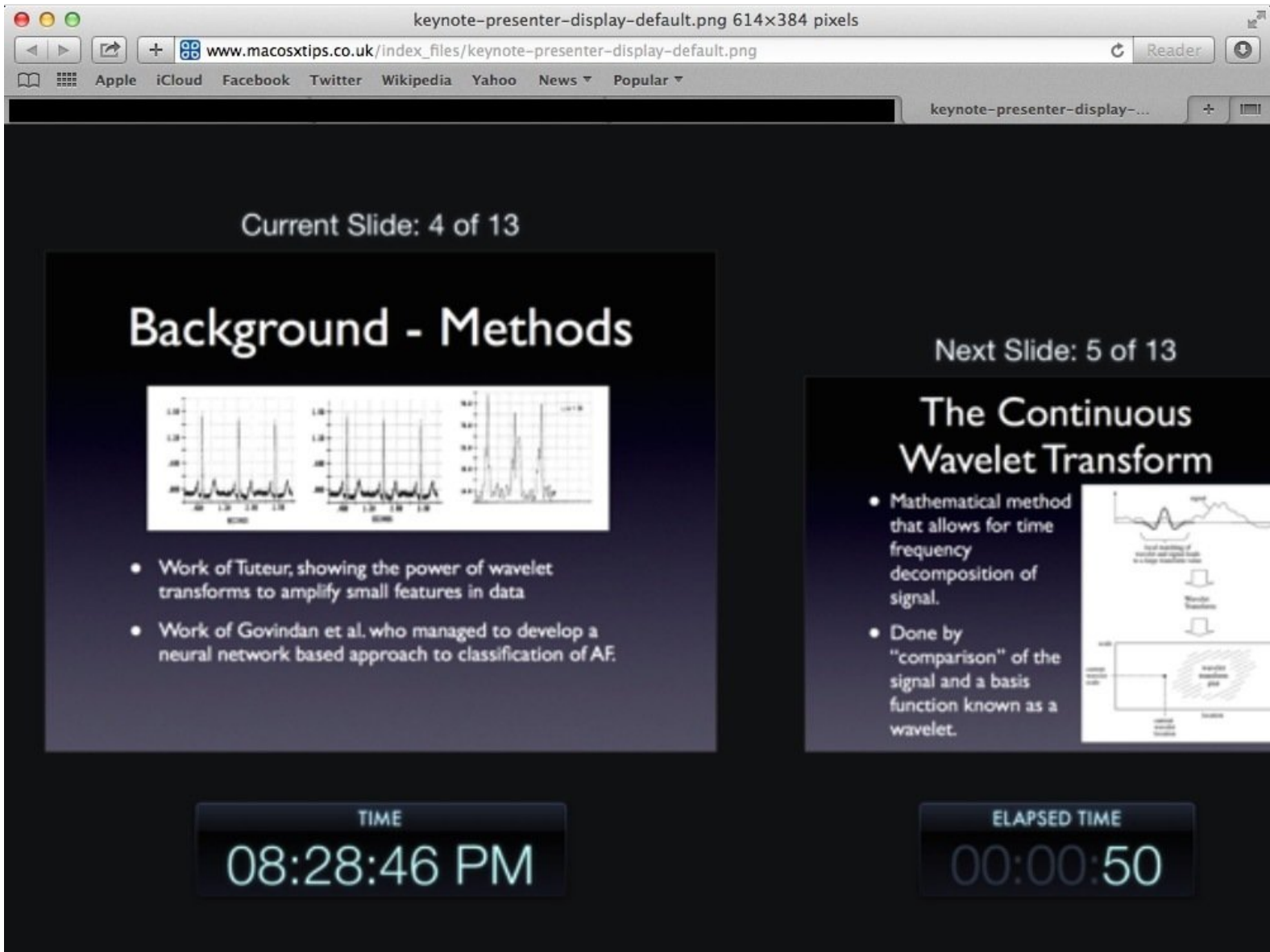


BIS Help Guides

Making use of multiple screens to see what's coming next

Learn how to make use of multiple screens to see what's coming next.

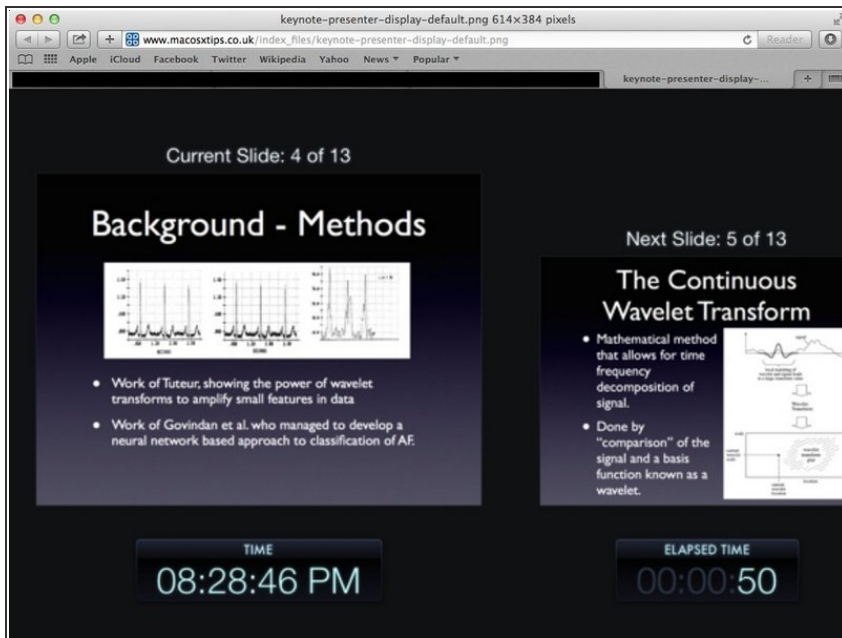
Written By: Aaron



INTRODUCTION

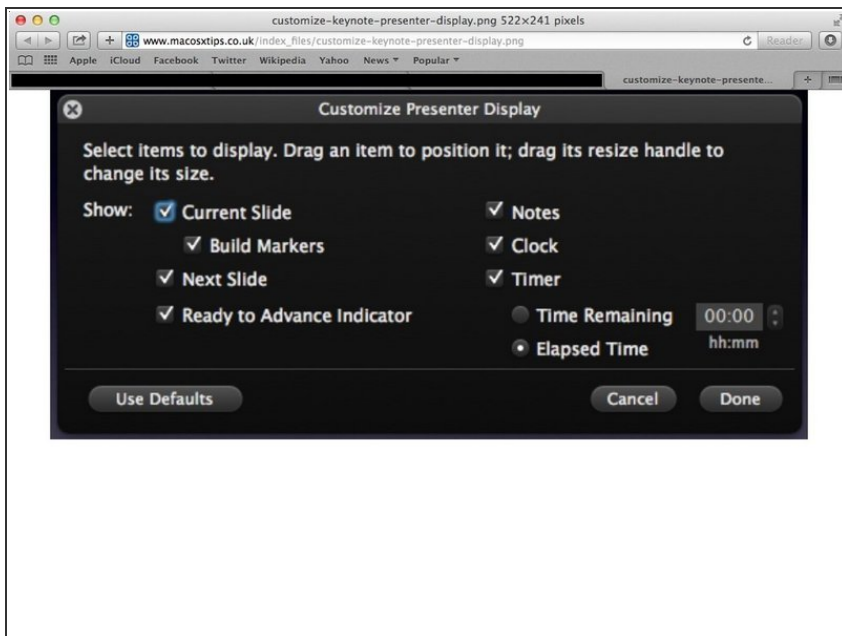
Learn how to make use of multiple screens to see what's coming next.

Step 1 — Presenter Display



- i** This screen shows the current slide, the next slide, the current time and the amount of time elapsed. It also shows presenter notes.

Step 2 — Changing The Setup Of Presenter Display



- i** You can change the setup of the presenter display with these options